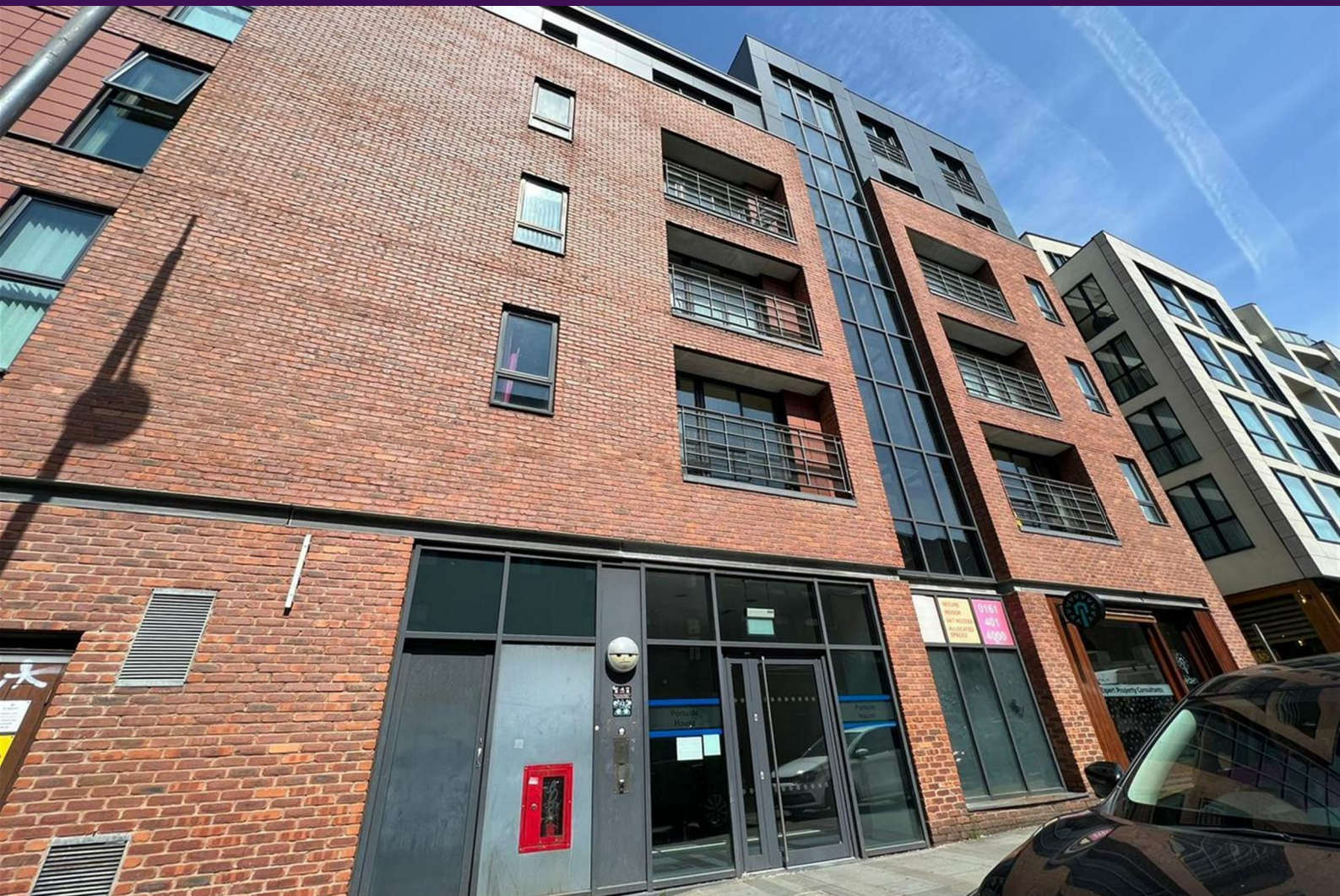


1A Old Haymarket 73-89 Victoria Street, Liverpool, L1 6AF  
Tel: 0151 305 2577  
Email: [liverpoolsales@ascendproperties.com](mailto:liverpoolsales@ascendproperties.com)  
[www.ascendproperties.com](http://www.ascendproperties.com)

# Ascend

Built on higher standards



Duke Street, Liverpool

£850 PCM

Elevate your urban living experience in this exquisite apartment nestled in the highly sought-after Ropewalks district. Positioned perfectly at the heart of the city, this residence offers a plethora of features that cater to discerning city dwellers.

The apartment welcomes you with a Juliet balcony and sliding door, infusing the open-plan living and kitchen area with abundant natural light. Essential appliances are provided for your convenience.

The master bedroom boasts generous proportions, ensuring ample space for relaxation, while the second bedroom adapts easily to meet your specific needs. The bathroom exudes contemporary sophistication, featuring sleek grey tiling, a pristine white suite, and a wall-mounted heated towel rail for added luxury.

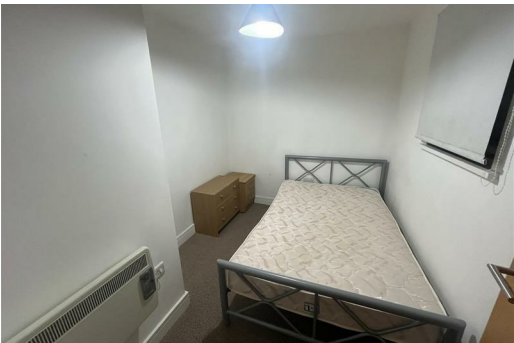
Step outside to discover a spacious communal garden, an oasis of greenery amidst the bustling cityscape. This property seamlessly combines modern living with the charm of the Ropewalks district, offering a vibrant urban lifestyle. Don't miss out on the opportunity to call this apartment your home sweet home.

Parking Included - £100pcm





20 Portside House, 29 Duke Street, Liverpool, L1 5AQ



Energy Efficiency Rating		Environmental Impact (CO <sub>2</sub> ) Rating	
Very energy efficient - lower running costs	Score	Very environmentally friendly - lower CO <sub>2</sub> emissions	Score
A	92-100	A	35-45
B	82-91	B	46-55
C	72-81	C	56-65
D	62-71	D	66-75
E	52-61	E	76-85
F	42-51	F	86-95
G	32-41	G	96-105